



STORMSHIELD

SN-XL-SERIES

5200/6200

Up to 319.3 Gbps

FIREWALL PERFORMANCE

Up to 59.1 Gbps

VPN PERFORMANCE

Modularity

NETWORK CONNECTIVITY

NETWORK SECURITY



FLEXIBILITY AND PEACE OF MIND

FOR COMPLEX INFRASTRUCTURES



Very high-performance adaptability

Boost your platform as you grow simply by changing your licence. The SN-XL-Series platform enables you to anticipate your performance needs with confidence.

Connectivity and network modularity

Network extension capabilities give you a huge range of connectivity options. Combined with the flexibility of a modular mix of copper and fiber interfaces, it supports you as your infrastructure evolves.

Resilience of complex infrastructures

High availability, redundant power supply and link aggregation functions enable you to build a complex, resilient architecture.

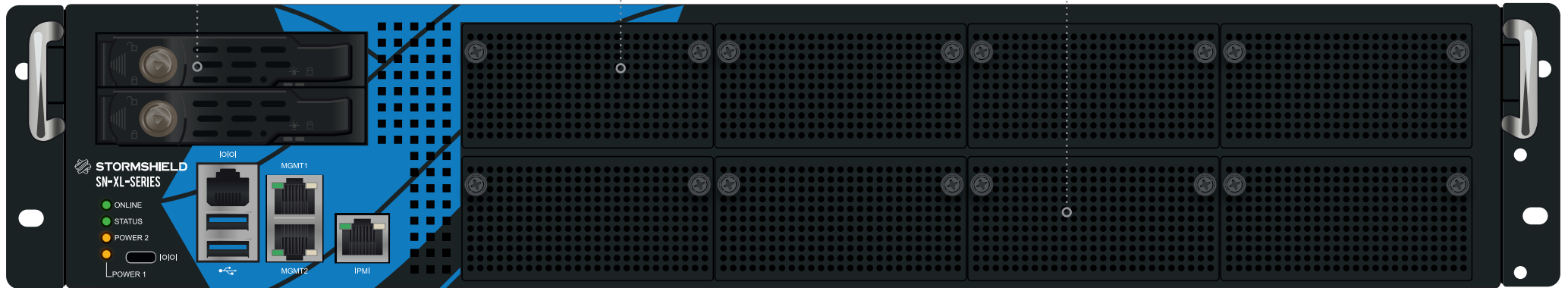
FOR EUROPEAN CYBERSECURITY

When you choose Stormshield, you gain true strategic independence and peace of mind in a highly charged geopolitical context. Completely developed in France, our firmware has received certification from leading European cybersecurity agencies such as ANSSI (France) and CCN (Spain), as well as Standard Qualification.

Hot-swappable SSD disks for log storage and backups

Connectivity
62 fiber interfaces

8 extensions
Copper and fiber modularity (1Gb/10Gb/25Gb/40Gb)



5 hot-swappable fans

Hot-swappable redundant power supply

ESSENTIAL DATA



Copper connectivity

2 to 64

Interfaces 100/1000/2500



Fiber connectivity

Up to 8

Extension slots

SN-XL-Series

5200



License
update



SN-XL-Series

6200



Performance

239.8 Gbps

Firewall



Performance

319.3 Gbps

Firewall



VPN

43.5 Gbps

IPsec throughput



VPN

59.1 Gbps

IPsec throughput



**STORMSHIELD
SN-XL-SERIES**

FEATURES

Non-contractual document. The features mentioned are for version 5.x.

Resilient complex infrastructures

LACP, MSTP/RSTP, high availability and redundant power supply ensure **resilience for complex architecture.**

Connectivity and network modularity

The eight network expansion slots provide a mix of copper and fiber network interfaces, **adapting perfectly to your infrastructure.**

Hardened VPN Concentrator

The implementation of intrusion prevention on data passing through IPSec VPN tunnels strengthens the **protection of secure communications.**

... and unique firmware

Stormshield offers a unique, ergonomic interface for managing its products range. This **reduces operating costs, facilitates the management** of IT teams and **saves time** for the company.

And more features

Usage control

Firewall/IPS/IDS mode • Identity-based firewall • Microsoft Services Firewall • Industrial firewall/IPS/IDS • Industrial application control • Detection and control of the use of mobile terminals • Geolocation (countries, continents) • Dynamic Host Reputation • Transparent authentication (Active Directory, SSO Agent, SSL) • Agent-based multi-user VDI authentication (Citrix, TSE) • Guest and sponsorship mode authentication, webservices • Host Checker • Zero Trust Network Access (ZTNA)

Protection from threats

Intrusion detection and prevention • Protocols autodetection and compliancy check • Application inspection • Protection from denial of service attacks (DoS) • Protection from SQL injections • Protection from Cross-Site Scripting (XSS) • Protection from malicious Web2.0 code and scripts (Clean & Pass) • Trojan detection • Detection of interactive connections (botnets, Command & Control) • Protection from data evasion • Advanced management of fragmentation • Automatic reaction to attack (notification, quarantine, block, QOS, dump) • Antispam and antiphishing: reputation-based analysis, heuristic engine • Embedded antivirus (HTTP, SMTP, POP3, FTP) • SSL decryption and inspection • VoIP protection (SIP) • Collaborative security: IP reputation, Cloud based Sandbox on the European territory (option)

Confidentiality

Site-to-site or nomad IPsec VPN • Post Quantum Resistant • Remote SSL VPN access in multi-OS tunnel mode (Windows, Android, iOS, etc.) • SSL VPN agent with automatic configuration (Windows) • Support for Android/iPhone IPsec VPN

Network - Integration

IPv6 • NAT, PAT, transparent (bridge)/routed/hybrid modes • Dynamic routing (RIP - OSPF - BGP) • Multicast • Multiple link management (balancing, failover) • Multi-level internal or external PKI management • Multi-domain authentication (including internal LDAP) • Policy-based routing (PBR) • QoS management • DHCP client/relay/server • NTP client • DNS proxy-cache • HTTP proxy • Aggregate links (LACP, Broadcast Mode and Redundancy) • Spanning-tree management (RSTP/MSTP) • SD-WAN, Multifactor Authentication (MFA)

Management

Web-based management • Interface with privacy mode (GDPR compliancy) • Object-oriented security policy • Contextual security policy • Real-time configuration helper • Rule counter • Connected or disconnected security updates • Global/local security policy • Embedded log reporting and analysis tools • Interactive and customizable reports • Support for multiple syslog server UDP/TCP/TLS • SNMP v2, v3 agent • IPFIX • Automated configuration backup • External storage (option) • Open API • Script recording • High availability.

STORMSHIELD

PERFORMANCE ¹	5200	6200
Firewall throughput (1518 bytes UDP)	239.8 Gbps	319.3 Gbps
Firewall throughput (IMIX)	64.7 Gbps	97.3 Gbps
IPS throughput (1518 bytes UDP)	93.1 Gbps	132 Gbps
IPS throughput (IMIX)	24.9 Gbps	40 Gbps
Threat protection*	10.8 Gbps	12.4 Gbps

* Threat protection is measured with firewall, IPS, antivirus, IP reputation, and web application security enabled, using a realistic traffic mix, and with logging enabled.

VPN	5200	6200
IPsec throughput - AES-GCM (1408 byte UDP)	43.5 Gbps	59.1 Gbps
IPsec throughput - AES-GCM (IMIX)	21.6 Gbps	28.2 Gbps
Nb of IPsec VPN tunnels (1024 kbps per tunnel)	20,000	23,000
Nb of SSL VPN clients	5,000	7,500

NETWORK CONNECTIVITY	5200	6200
Max number of simultaneous sessions	15,000,000	25,000,000
Nb of new sessions/sec.	420,000	500,000
Nb of main gateways (max)/backup (max)	64/64	64/64

CONNECTIVITY	5200	6200
Copper interfaces 10/100/1000/2500	2-64	2-64
Copper interfaces 10 Gb	0-32	0-32
Fiber interfaces 1 Gb	0-62	0-62
Fiber interfaces 10 Gb (dual speed)	0-64	0-64
Fiber interfaces 25 Gb	0-32	0-32
Fiber interfaces 40 Gb	0-16	0-16
Slot for extension modules	8	8

SYSTEM	5200	6200
Nb of filtering rules (recommended/specific config.)	16,384/32,768	16,384/32,768
Max number of static routes	10,240	10,240
High availability	Active-Passive	Active-Passive

TECHNICAL SPECIFICATIONS

HARDWARE	5200	6200
Storage	480 GB SSD (hot-swappable - RAID 1)	
Large Storage for local storage	960 GB SSD (option Big Data - RAID 1)	
MTBF at 25°C	22.9 years	
Size	2U -19"	
Height x Width x Depth (mm)	88.9 x 443 x 650	
Weight	18.97 kg (41.82 lbs)	
Power supply	AC: 2 x 100 240V 60-50Hz 13-10A DC (optional): 2 x -40 -72VDC 50A MAX	
Redundant power supply	Yes (hot-swappable)	
Power consumption (idle/avg/max in Watt)	196/457/460	
Fans	5 (hot-swappable)	
Noise level	90 dBA	
Thermal dissipation (idle/avg/max in BTU/h)	668/1,558/1,569	
Operating environment	Temperature: 0° to 40°C (32° to 104°F) Humidity: 0% to 95% @ 40°C (104°F)	
Storage environment	Temperature: -30° to 65 °C (-22° to 149 °F) Humidity: 5% to 95% @ 60°C (140°F)	

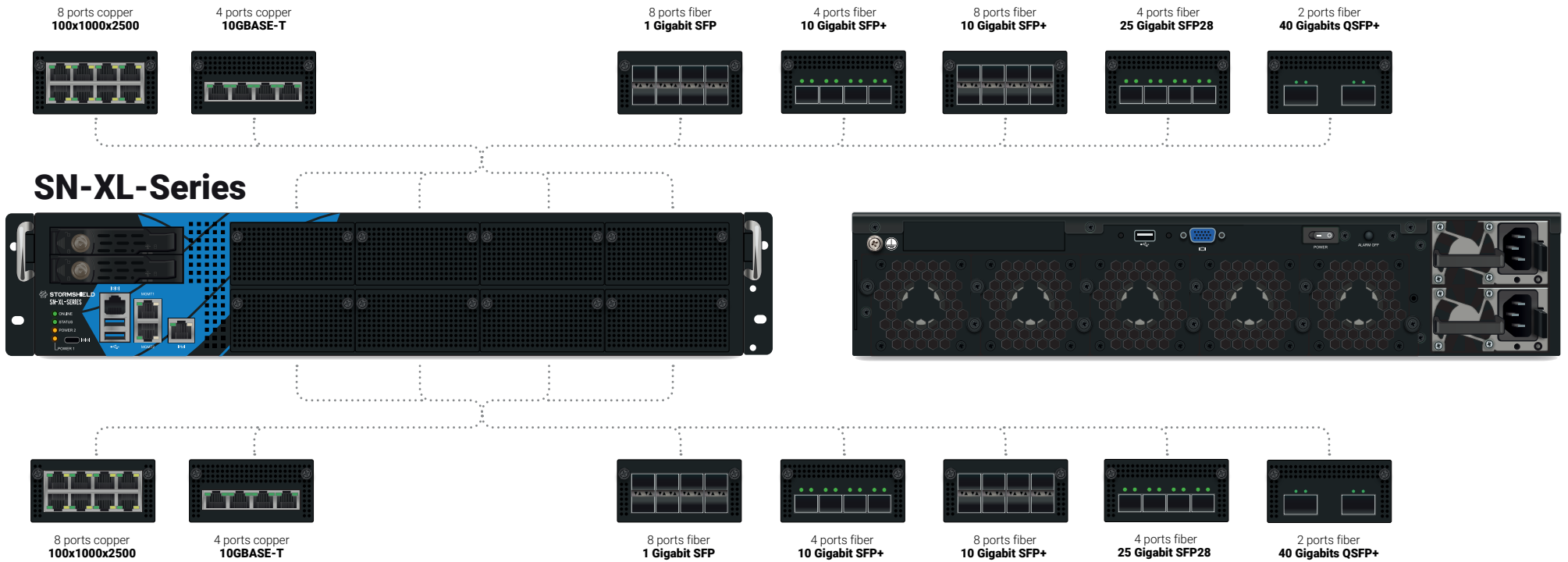
CERTIFICATIONS	5200	6200
Compliance	CE/FCC/RCM/UKCA/CB	
Certifications	EAL4+, Qualification Standard, Producto CCN Aprobado & Cualificado, IEC-62443-4-1	

¹ Performance is measured in a laboratory environment under ideal conditions for version 5.x. Results may vary depending on test conditions and software version.

EXTENSION MODULES

TYPE	EXTENSION MODULE	Nb	REFERENCE
Fiber	1 Gigabit SFP	8 ports	NC-1-8xG-FIB-SFP
Fiber	10 Gigabit SFP+	4 ports	NC-1-4x10G-F-SFP-P
Fiber	10 Gigabit SFP+	8 ports	NC-1-8x10G-F-SFP-P
Fiber	25 Gigabit SFP28	4 ports	NC-1-4x25G-SFP28
Fiber	40 Gigabit QSFP+	2 ports	NC-1-2x40G-QSFP-P

TYPE	EXTENSION MODULE	Nb	REFERENCE
Copper	100x1000x2500	8 ports	NC-1-8x2_5G-C
Copper	10GBASE-T	4 ports	NC-1-4x10G-COP



SERVICE PACKS

ESSENTIAL SECURITY PACK

Corporations seeking unified protection from threats conveyed by the web or electronic mail and wishing to closely monitor the online activity of their users would find it advantageous to subscribe to this pack. With network segmentation, secure communications, SD-WAN, intrusion prevention, and Zero Trust Network Access (ZTNA), they are assured of an essential level of security.

PREMIUM SECURITY PACK

This pack focuses on corporations with stringent security requirements, by **providing the best technology for countering even the most sophisticated attacks. Advanced antimalware system with emulation technology and URL filtering in cloud mode based on more than 70 categories (Extended Web Control)** will raise your protection to a level that is unrivalled on the market.

Next-Generation Firewall

- Layer 7 Firewall
- Geolocation
- Web applications
- User authentication, MFA & SSO

Secure SD-WAN & ZTNA

- IPsec VPN gateway
- Postquantum encryption
- SSL VPN gateway & client
- Device posture assessment

Threat Protection

- IPS/IDS
- Trusted public certificates
- Antispam
- Threat intelligence (IP & domains)
- Extended Web Control (URL filtering)
- Antimalware
- Breach Fighter AI-powered sandboxing
- Industrial protocols DPI

Services

- Software maintenance
- Hardware maintenance
- Standard support access
- Automated configuration backup
- 24x7 technical support access
- Express exchange
- Secure return

Essential Security Pack

Premium Security Pack

Layer 7 Firewall	✓	✓
Geolocation	✓	✓
Web applications	✓	✓
User authentication, MFA & SSO	✓	✓
Secure SD-WAN & ZTNA		
IPsec VPN gateway	✓	✓
Postquantum encryption	✓	✓
SSL VPN gateway & client	✓	✓
Device posture assessment	✓	✓
Threat Protection		
IPS/IDS	✓	✓
Trusted public certificates	✓	✓
Antispam	✓	✓
Threat intelligence (IP & domains)	✓	✓
Extended Web Control (URL filtering)	Option	✓
Antimalware	Option	✓
Breach Fighter AI-powered sandboxing	Option	✓
Industrial protocols DPI	Option	✓
Services		
Software maintenance	✓	✓
Hardware maintenance	✓	✓
Standard support access	✓	✓
Automated configuration backup	✓	✓
24x7 technical support access	Option	Option
Express exchange	Option	Option
Secure return	Option	Option

HARDWARE EXCHANGE

All security packs include hardware maintenance in order to ensure business continuity in the event of a hardware failure. Your appliance will simply be exchanged for a similar replacement product. Three levels of service are available.

Standard exchange

Your appliance will be exchanged once our customer service center receives the defective appliance.

Express exchange

Your appliance will be exchanged in advance. As soon as our support centers diagnose a hardware failure, the replacement product will be sent, which you would receive the next working day¹.

Serenity4all

With this service, you replace the product yourself once our support centers have diagnosed the malfunction fault².

¹ Please check with us regarding the eligible countries and cities. Applies to diagnoses made before 1 p.m.

² Replacement products must be acquired in advance for this service.

FOR OPTIMAL PROTECTION

Stormshield offers options to cover your additional cybersecurity needs.

Neutralize the most sophisticated threats with Stormshield Network Advanced Antivirus.

Benefit from an advanced and reliable filtering solution with Stormshield Extended Web Control.

Expand your home office with highly secure remote access with Stormshield VPN Client.

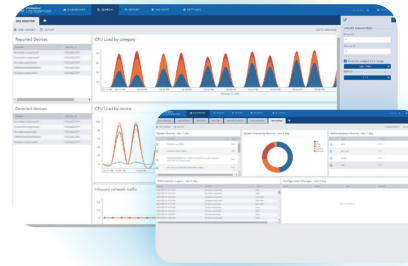
ANY DOUBTS ABOUT THE ATTACHMENTS



Stop risking the security of your infrastructure with a dubious attachment and put it to the test with Stormshield Breach Fighter.

→ breachfighter.stormshieldcs.eu

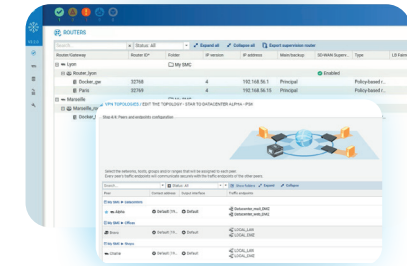
MANAGE YOUR SECURITY WITH EFFICIENT TOOLS



A decision-making tool

with Stormshield Log Supervisor

Optimize your research tasks and incident response. And thanks to its quick overview of system effectiveness, you will have peace of mind knowing your security investments are worthwhile.



Management of large infrastructures

with Stormshield Management Center

Stormshield Management Center exchanges SNS firewalls configuration and monitoring data in real time, while ensuring their confidentiality and integrity. Its intuitive graphical interface minimizes configuration errors and its global management of security and filtering policies eliminates repetitive tasks.

THE **EUROPEAN**
CHOICE
IN **CYBERSECURITY**

www.stormshield.com